

BOYNTON COMMONS P.C.D. 16

A PLANNED COMMERCIAL DEVELOPMENT SITUATE IN SECTIONS 19 AND 30, TOWNSHIP 45 SOUTH, RANGE 43 EAST BEING A REPLAT OF A PORTION OF LOTS 39, 40, 41, 43 AND 44 OF THE SUBDIVISION OF SECTION 19, TOWNSHIP 45 SOUTH, RANGE 43 EAST, AS RECORDED IN PLAT BOOK 7, PAGE 19 OF THE PUBLIC RECORDS OF PALM BEACH COUNTY, FLORIDA, AND A PORTION OF LOT "A", BLOCK 1, AND A PORTION OF LOT "A", BLOCK 2 OF THE SUBDIVISION OF PALM BEACH FARMS COMPANY PLAT NO. 8, AS RECORDED IN PLAT BOOK 5 PAGE 73, OF THE PUBLIC RECORDS OF PALM BEACH COUNTY, FLORIDA.
 CITY OF BOYNTON BEACH, PALM BEACH COUNTY, FLORIDA
 SHEET 3 OF 3 APRIL, 1997

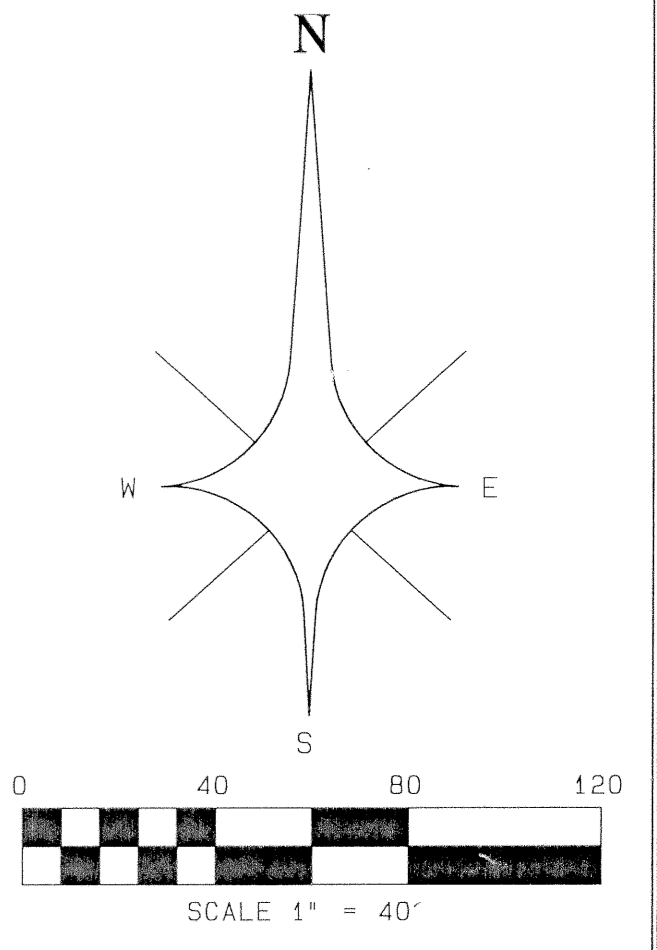
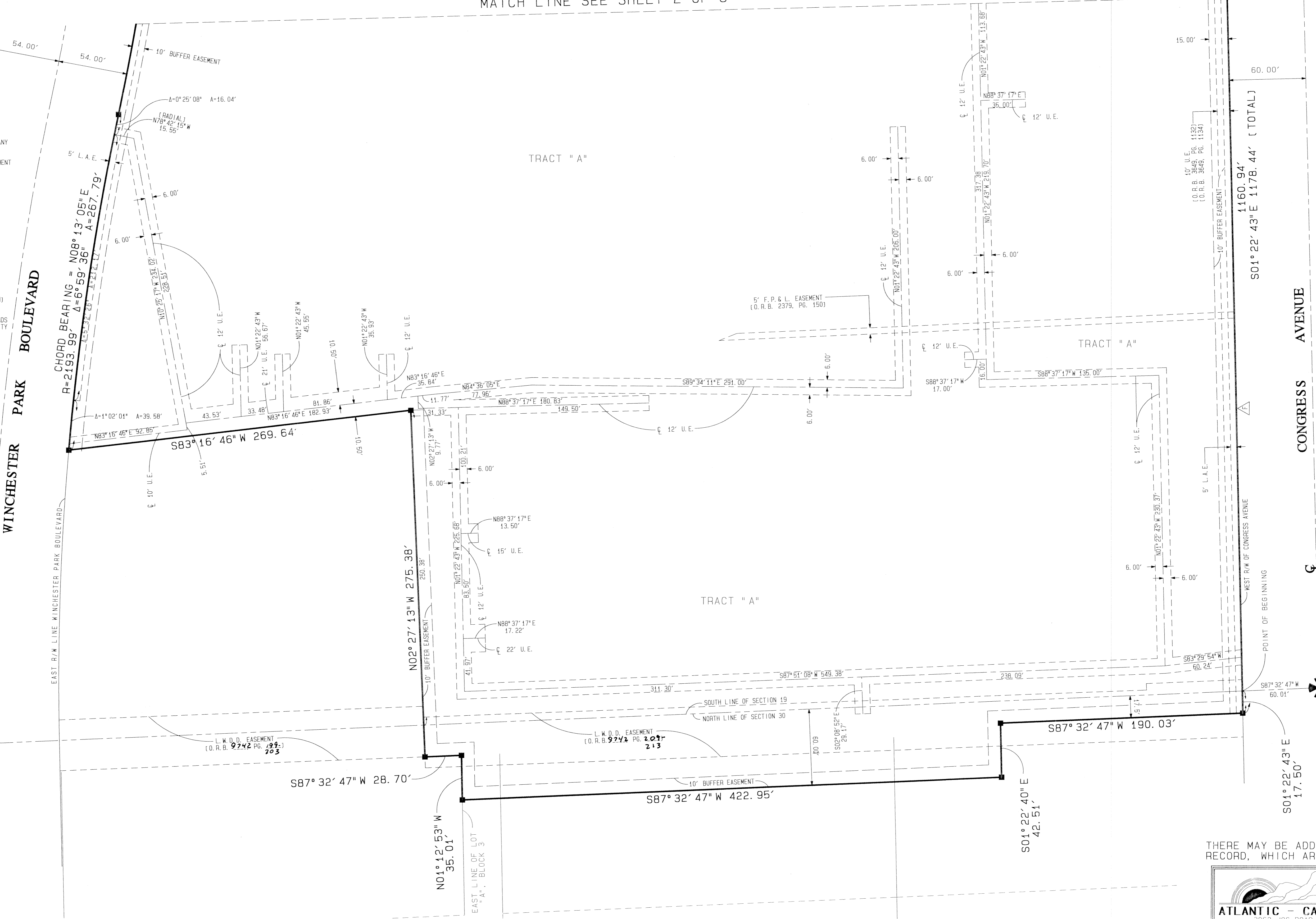
STATE OF FLORIDA } SS
 COUNTY OF PALM BEACH }
 THIS PLAT WAS FILED FOR RECORD AT _____ DAY OF _____ AD, 1997 AND DULY RECORDED IN PLAT BOOK _____ ON PAGES _____ AND _____
 DOROTHY H. WILKEN, CLERK
 CIRCUIT COURT
 BY: _____ DC

MATCH LINE SEE SHEET 2 OF 3

- LEGEND:
- A = CENTRAL ANGLE/DELTA
 - C = CENTERLINE
 - CH = CHORD
 - D.B. = DEED BOOK
 - D.E. = DRAINAGE EASEMENT
 - F.P. & L. = FLORIDA POWER AND LIGHT COMPANY
 - L = ARC LENGTH
 - L.A.E. = LIMITED ACCESS EASEMENT
 - L.M.A.E. = LAKE MAINTENANCE ACCESS EASEMENT
 - L.M.E. = LAKE MAINTENANCE EASEMENT
 - L.W.D. = LAKE WORTH DRAINAGE DISTRICT
 - N.R. = NON-RADIAL
 - N.T.S. = NOT TO SCALE
 - O.R.B. = OFFICIAL RECORDS BOOK
 - P.B. = PLAT BOOK
 - PG. = PAGE
 - P.O.B. = POINT OF BEGINNING
 - P.O.C. = POINT OF COMMENCEMENT
 - R = RADIUS (RADI)
 - R.F. = RADIAL TO FRONT LOT LINE
 - R.R. = RADIAL TO REAR LOT LINE
 - R/W = RIGHT OF WAY
 - U.E. = UTILITY EASEMENT
 - W.C. = WITNESS CORNER
- ⊙ = PERMANENT CONTROL POINT (PCP)
SET PCP #5219
 - = PERMANENT REFERENCE MONUMENT (PRM)
SET PRM #5219
 - △ = DENOTES FRONT OF PROJECT IN REGARDS TO SETBACK REQUIREMENTS OF THE CITY OF BOYNTON BEACH, FLORIDA.

486

SUBDIVISION # Boynton Commons
 BOOK 80
 PAGE 16
 FLOOD MAP #
 ZONING
 QUAD #
 SE
 PID NAME City of Boynton Beach



THERE MAY BE ADDITIONAL RESTRICTIONS OF RECORD, WHICH ARE NOT SHOWN ON THIS PLAT

ATLANTIC - CARIBBEAN MAPPING, INC.
 3062 JOG ROAD - GREENACRES, FLORIDA 33467
 (561) 964-7884; FAX (561) 964-1969

PROFESSIONAL SURVEYORS AND MAPPERS